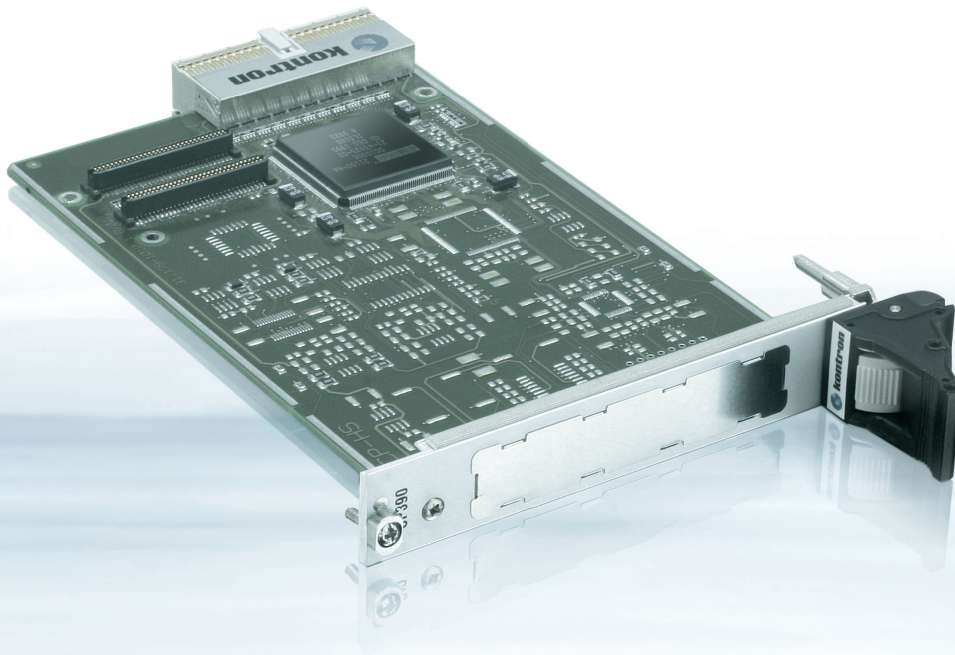


CP390



3U CompactPCI® PMC CARRIER BOARD

- ▶ interface flexibility through a broad range of PMC modules
- ▶ 32-bit bus master interface
- ▶ INT A, B, C, D support
- ▶ version for extended temperature available

POSSIBILITIES START HERE



kontron

CP390

3U CompactPCI® PMC CARRIER BOARD

The CP390 is a 3U CompactPCI® carrier board for one PMC module. It has been designed to maximize the advantages provided by PMC modules in a 3U CompactPCI® environment. Flexibility, versatility, convenience and ease of use have been keynotes throughout the design process.

Based on the PMC specification the CP390 can be easily adapted to the individual application needs. Therefore it can provide system designers a cost-effective solution to extend a CompactPCI system via the wide array of interfaces and functions available on the market.

▶ TECHNICAL INFORMATION

COMPACT PCI INTERFACE		PICMG 2.0 Rev 2.1 compatible, 32-bit/33 MHz, DMA bus master, Interrupt level INTA, INTB, INTC, INTD support, 3.3V/5V operation
PMC CARRIER INTERFACE		<ul style="list-style-type: none"> - Compatible with IEEE 1386.1 specification, version 2.0 - 32-bit/33 MHz PCI bus - 5.0 V compatible - Interrupt level INT A, B, C, D routed directly to CompactPCI
CHARACTERISTICS		<ul style="list-style-type: none"> - DEC Bridge 21150 - Hardware-controlled power ramp up - Local reset generation - Signal precharge
GENERAL	POWER CONSUMPTION DIMENSIONS OPERATING TEMP. STORAGE TEMP. OPERATING HUMIDITY WEIGHT MTBF	230 mW (without PMC module) @ 3.3V, 5V requirement dependent on PMC module 100mm x 160mm (3U card size) 0°C to +60°C (standard), -40°C to +85°C (extended) -55°C to +85°C 5 - 95% (non condensing) -130 g -2.204.015 h MIL-HDBK-217 FN2 Ground Benign 30°

▶ ORDERING INFORMATION

ARTICLE	PART NO.	DESCRIPTION
CP390	19879	3U CompactPCI PMC carrier
CP390-E2	22931	3U CompactPCI PMC carrier, extended temp. (-40°C to +85°C)
KIT-CP390	20216	CP390 User's Manual on CD

▶ CORPORATE OFFICES

EUROPE, MIDDLE EAST & AFRICA

Lise-Meitner-Str. 3-5
 86156 Augsburg
 Germany
 Tel.: + 49 821 4086 0
 Fax: + 49 821 4086 111
 info@kontron.com

NORTH AMERICA

14118 Stowe Drive
 Poway, CA 92064-7147
 USA
 Tel.: + 1 888 294 4558
 Fax: + 1 858 677 0898
 info@us.kontron.com

ASIA PACIFIC

1-2F, 10 Building, No. 8 Liangshuihe 2nd Street,
 Economical & Technological Development Zone,
 Beijing, 100176, P.R.China
 Tel.: +86 10 63751188
 Fax: +86 10 83682438
 info@kontron.cn